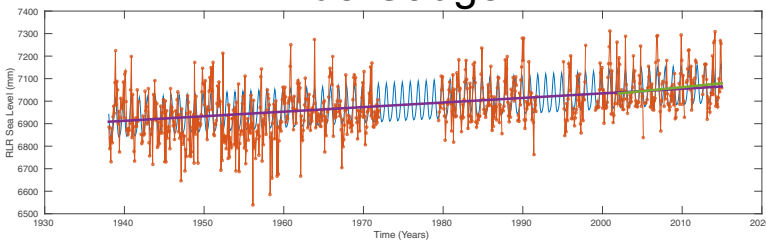


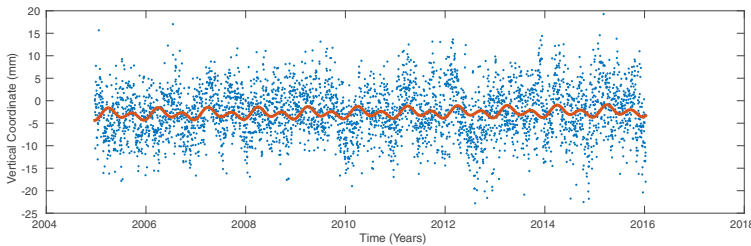
# Holyhead



Tide Gauge



GPS/Vertical Land Movement



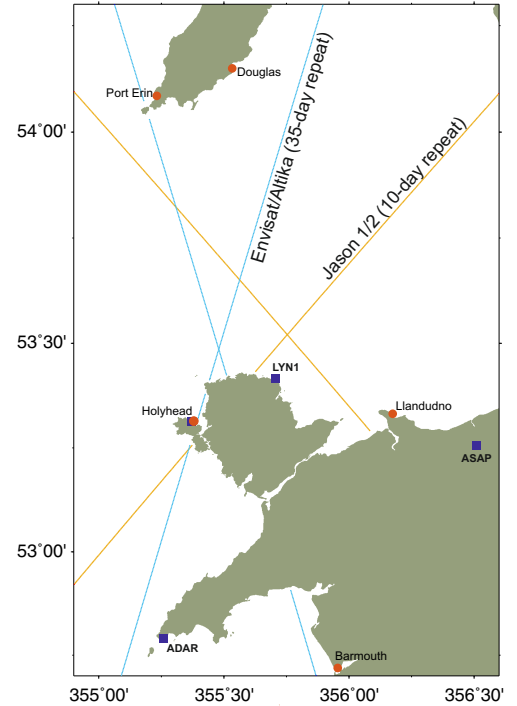
Tide Gauge : Holyhead; PSMSL ID : 5

Sea Level Rate Over Entire Period (purple line above) :  $2.0 \pm 0.4$  mm/yr\*  
 Sea Level Rate Over Altimeter Period (green line above) :  $3.5 \pm 2.6$  mm/yr

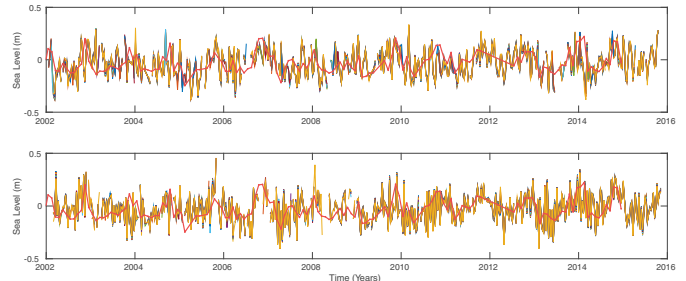
Jason1/2 Track #163 Crosses Over Anglesey and Holyhead. Two Altimeter SSHA plots are shown, one west of the tide gauge (top) and another east of the tide gauge (bottom). The average trends for the 10 nearest west and east nominal altimeter points are

Western set :  $3.9 \pm 3.6$  mm/yr  
 Eastern set :  $1.6 \pm 3.6$  mm/yr

\* Data from pre 1960 was not used in the calculation of trend because it was flagged in the PSMSL database



Jason1/2 Altimeter



Red Line is the monthly PSMSL record at Holyhead. Coloured Lines are the 10 closest altimeter points on track #163

GPS and Vertical Land Movement

Site	Distance from TG (km)	Rate (mm/yr)
HOLY	1.5	$0.07 \pm 0.35$
LYN1	24.7	$0.05 \pm 0.58$
ASAP	58.9	$0.31 \pm 0.34$
ADAR	76.1	$0.05 \pm 0.39$

Predicted VLM at tide gauge from model : 0.26 mm/yr